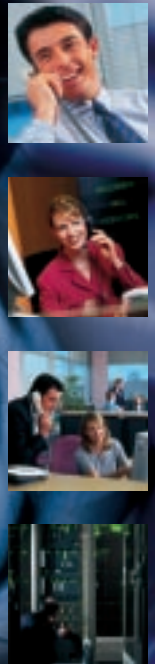


Panasonic



The complete business communications solution

S-ICX

Integrated Voice
& Data Solutions

The flexible telecommunications solution

ICX and beyond

Panasonic telecommunications products – such as the ICX system – are well known for their high quality, proven reliability and leading edge technology. The S-ICX – designed and built to the same high standards – offers these same benefits and ease of use, but in a smaller package for the smaller business.

Today's future-proof solution

The S-ICX not only meets your needs today, but as your business grows, and telecommunications develop, it can adapt to suit your changing requirements.

A compact, digital, hybrid PABX, the S-ICX has eight digital extension ports built in, and can grow to accommodate a further 48 digital handsets, as well as other single line products such as a fax, answering machine and modem. It supports digital cordless (DECT) systems, and addresses your multimedia communication requirements.

Employing the latest technologies (Computer Telephony Integration, desktop ISDN, Automatic Call Distribution and Voice Mail) the S-ICX is a future-proof solution. It will form the platform to accommodate future developments in Internet technology, such as voice over IP (VoIP).

When your business and your telecommunications needs grow, the S-ICX – based on a High Density Backplane – will still be your best solution, able to expand from its original eight extensions to 132 ports.



'Plug and play' telecommunications

We've made the S-ICX virtually a 'plug and play' system. Not only does it have automatic software configuration, but it also offers an upgrade path for legacy systems: Panasonic A-Series, SBS, S-DBS and DBS.

Like all Panasonic systems the S-ICX is fully supported by the Panasonic Dealer Network, with help, advice, efficient installation and long term support.

Small system, big ideas

The S-ICX offers the features of far bigger systems, in a smaller package. With its support for multi-site networking, it can be either a hub or a satellite of a networked communications system.

What's more, as well as offering the latest capabilities now, it also has the capacity to expand and incorporate new developments as they arise.

S-ICX
Integrated Voice & Data Solutions

The phone within your reach



Large Message Waiting LED

- Ringing indicator
- New voice mail messages
- Messages from other extensions

Multi Function

Alphanumeric LCD providing:

- Incoming caller's name and number (ISDN and CLI required)
- Names of exchange lines, DDI, groups and extensions
- Call duration (ISDN)
- Status messages (Message Waiting, Absent Messages, Feature Set)

Soft Keys

- Provide enhanced access to speed dial numbers and system functions

Programmable Feature Keys

- Extensions busy lamp field
- Line key
- Virtual port key
- Call forward
- Do not disturb
- Voice mail
- Other system features

Line Key

- Automatic access to free line

Volume Control

Further Handset Features

- Headset compatible
- Wall mountable
- 5 metre line cord



On/Off Key

- Speaker phone access
- On hook dialling

Large Hold Key

Memory Key

- 20 speed dial numbers
- Access to up to 800 system speed dial numbers

A full range of handsets and DSS consoles is available



VB-3011



VB-D411B
Also available in white



VB-D411DS
Also available in black



VB-D611DSB
Also available in white



VB-D411LDS & VB-D631
Also available in black

The system that answers your business needs



Upgradeability

As your business grows and your needs develop, being able to upgrade rather than replace becomes an important feature of your telecommunications system.

The S-ICX can replace your existing A-Series, SBS, S-DBS or DBS system, giving you the flexibility of retaining rather than replacing your current handsets.

It will allow you to take advantage of modern technology and features, such as ISDN Calling Line Identification (CLI) and DDI with number or name.

High Density

A wide range of extension cards available for the S-ICX makes it possible to connect either 4,8,16 or 24 hand-sets per card. This means you can have larger capacity in a smaller cabinet, taking up less valuable space.

Networking

Whether you need to create a seamless network across the street or around the world, the S-ICX can easily provide connectivity through ISDN or via your private Voice/Data circuits.

For example, using its routing programmes, you can direct calls through to other networked branches before breaking out onto the public network closer to the destination, based on the telephone number dialled – eliminating long distance charges. You can also use the flexible numbering scheme to allow direct desk to desk dialling between users on the interconnected sites as if it were a single system. Call transfer and forwarding can be set up over digital links.

Centralised System

Using the centralised operator and unified messaging technology, calls can be answered and transferred across the network – and messages for remote users left on the centralised voice mail.

Virtual Private Networking

If a fixed link between sites isn't economically viable, the S-ICX will support Virtual Private



Networking, using closed number dialling and digit translation. It uses AC15 and Q-SIG (the latest European standard for digital private networking) allowing feature transparency.

Using the S-ICX, connection to primary and basic rate ISDN is available down to the desktop. You can choose multiples of primary and basic rate Euro-ISDN, to maximise capabilities for file and data transfer, video conferencing, and much more.

For system-to-system or as part of large multi-location environments, the S-ICX provides the ideal networking solution.

Advanced Route Selection

Finding the most effective, cost-efficient way to route calls can be difficult, when there are so many network carriers and operators to choose from. To save you the trouble, the S-ICX will select the best route from the configured options to ensure your call gets through by the most cost-efficient route.

Data Capabilities

The faster you can transfer data, the more efficient your business can be. Advanced telephony applications and the S-ICX can help you achieve this.

Data Capability Using ISDN

Few systems can offer connection to primary and basic rate ISDN to the desktop. With the S-ICX, you can choose either primary rate Euro-ISDN (ISDN30) or basic rate Euro-ISDN (ISDN2), or both. This provides faster, more efficient data to the desktop (up to 2Mbits/s), and supports high bandwidth applications such as video conferencing.

LAN & WAN Network Connectivity

Latest technology allows voice and data communications and internet access, by multiple users across different sites.

Computer Telephony Integration (CTI)

Connect the S-ICX to your PC and you can access desktop facilities as sophisticated as your application software will allow.

Applications such as Microsoft Outlook™, Goldmine™, ACT!™ or any written using the TAPI protocol, can be integrated with the S-ICX, to provide enhanced call processing solutions. For example, as you receive a call, details of the caller will pop up on screen, allowing you to give a personal greeting and deal more efficiently with the call.

The system supports 1st Party CTI now and will support 3rd Party Server based CTI by the end of 2000.

Voice Processing

The S-ICX can work in combination with the latest Unified Messaging Systems (UMS), to provide sophisticated Voice Processing and automated response functions.

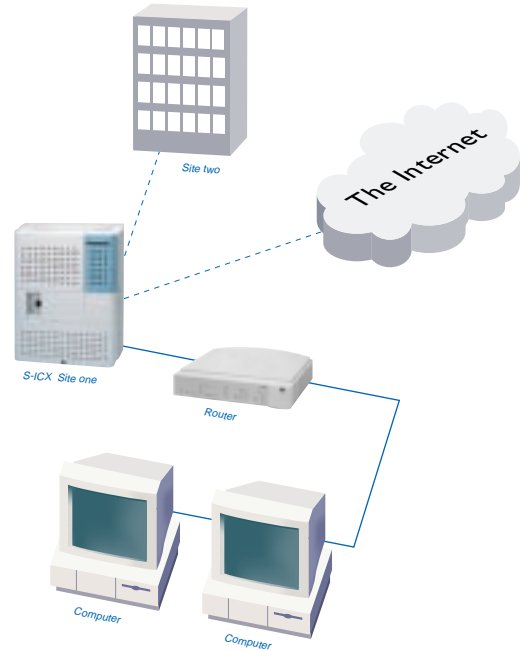
With Voice Processing, your customers can always communicate with your business. At any time of day or night, and from anywhere in the world, customers can leave a message, receive information about your products or services, or quickly select the department they need to speak to.

Automated response can even provide information to callers by email and fax, based on the responses to the UMS prompts.

Panasonic is constantly working with UMS manufacturers, to provide the solutions you need.

Automatic Call Distribution

Optional internal ACD makes it easy to handle large volumes of incoming calls with several operators. It can also interact with larger ACD systems and Unified Messaging Systems.



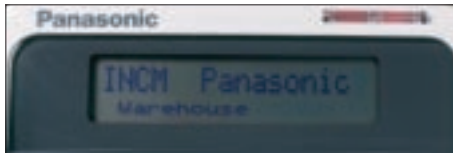
The S-ICX as part of a Data Application



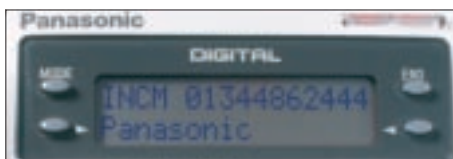
Integrating tomorrow's technology



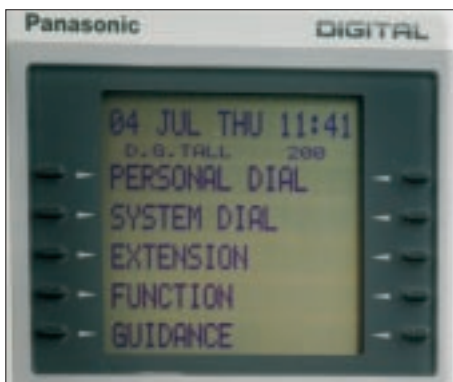
Incoming ISDN call showing CLI on a A-Series display handset (VA-12022)



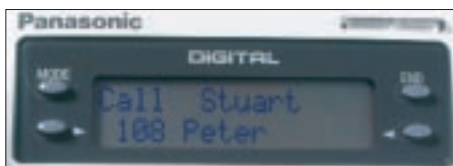
Incoming ISDN call showing CLI with name/DDI group name on SBS alphanumeric display handset (VB-9411ADS)



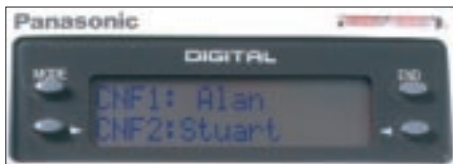
Incoming ISDN call showing CLI with name on a display handset (VB-D411DSV)



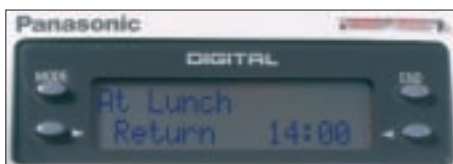
Main menu on a large display handset (VB-D411LDS)



Display showing a call from another extension



Display showing conference call parties



Display showing when user will return

ISDN Basic and Primary Rate Interfaces

With Euro ISDN the S-ICX offers even greater benefits and enhanced cost-effectiveness, with faster and more efficient communication.

Callers can access each S-ICX extension directly, using its own direct dial number (DDI). The extension user can then identify the caller by telephone number and company name – before taking the call – using Calling Line Identification (CLI) on a digital keyphone with LCD (CLI service has to be rented from the network provider).

Windows Operator Console

This screen-based operator console is not only simple and easy to use, but also saves space on the operator's desk.

Its flexible, scalable 'extension busy' lamp field provides visual extension status for other extensions. Calls can easily be transferred by 'drag and drop'.

DECT (Digital Enhanced Cordless Telephony)

Lightweight, digital, cordless phones are the ideal telecommunications solution for keeping key members of staff in contact, wherever they are in the office. The S-ICX is fully compatible with the Panasonic DECT system, helping you to improve internal and external communications, avoid missed calls, and increase your business efficiency.



System specification		
No of control units	S-ICX 1 (common)	
Processor type	CPC-HS	CPC-HM
System capacity	78 ports	132 ports
Maximum capacities:		
External lines	62	84
Analogue exchange lines	40	40
ISDN 30 channels	30	60
ISDN 2 channels	40	40
Extension Terminals	32	64
ISDN 30 channels to the desk	30	60
ISDN 2 channels to the desk	40	40
Digital Keyphones	24	56
Analogue Extensions	24	48
Operator positons	4	4
Interfaces		
Door phone per adapter	2	
Door opener per adapter	2	
System functions		
System speed dial	800	
Personal speed dial	20	
Tenant group	12	
Paging group	10	
Hunting group	12	
Pick up group	12	
Remote programming	9.6kbps(ext. modem)	
Networking	AC15/Q-SIG	
Dimensions(CCU)	450x360x220	
Weight(CCU)	7.0kg	
Power consumption(CCU)	340VA	

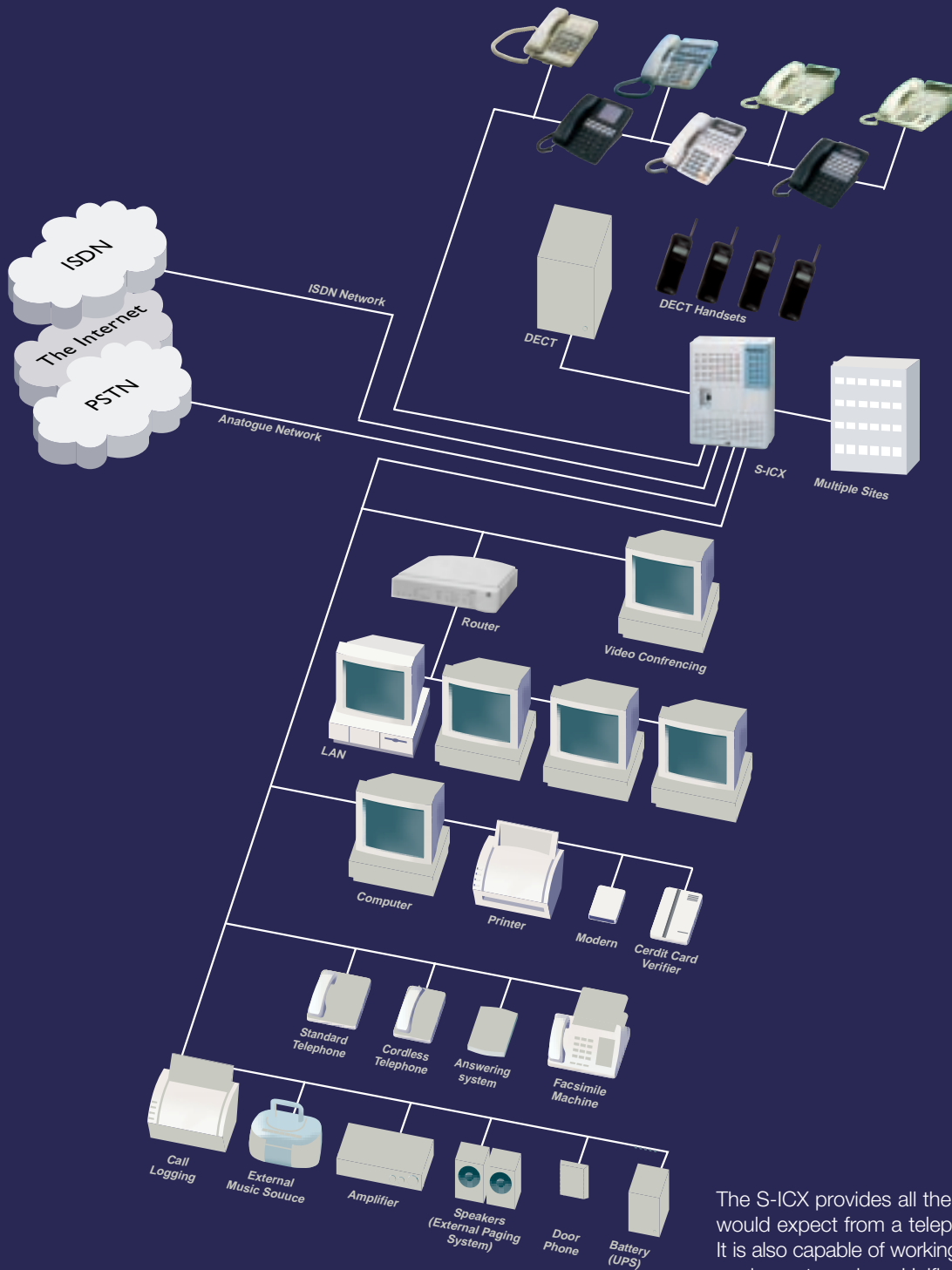


Model	Description	Black Option	Display CLI with Name	Display CLI with Number	Flexible Feature Keys	One Touch Keys	Message LED	Hot Keypad	Monitor Dialling	Handsfree Speech	Panasonic Headset Connectivity
Existing Extension Terminals											
VB-3011	0 key handset	-	-	-	0	0	✓	✓	✓	-	✓
VB-D411	12 key standard	✓	-	-	12	10	✓	✓	✓	-	✓
VB-D411DS	12 key executive	✓	✓	-	12	10	✓	✓	✓	-	✓
VB-D411DSV	12 key voice recognition	-	✓	-	12	10	✓	✓	✓	-	✓
VB-D411LDS	12 key large display	✓	✓	-	12	10	✓	✓	✓	-	✓
VB-D611D	24 key executive	-	✓	-	24	10	✓	✓	✓	-	✓
VB-D611DS	24 key executive	✓	✓	-	24	10	✓	✓	✓	-	✓
VB-D331	24 key extension BLF	-	-	-	24	10	-	✓	✓	-	✓
VB-D631	72 key console	✓	-	-	72	-	-	✓	-	-	✓
Legacy Extension Terminals (Note 1)											
A-Series Telephones											
VA-30920	6 key standard	-	-	-	6	10	- (Note 2)	✓	✓	-	-
VA-12020	12 key standard	-	-	-	12	10	- (Note 2)	✓	✓	-	-
VA-12022	12 key display	-	-	✓	12	10	- (Note 2)	✓	✓	✓	-
SBS Telephones											
VB-9211	6 key standard	-	-	-	6	10 (Note 3)	✓	✓	✓	-	✓
VB-9211DS	6 key display	-	-	✓	6	10 (Note 3)	✓	✓	✓	-	✓
VB-9411	12 key standard	-	-	-	12	10 (Note 3)	✓	✓	✓	-	✓
VB-9411DS	12 key display	-	-	✓	12	10 (Note 3)	✓	✓	✓	-	✓
VB-9411ADS	12 key alphanumeric	-	✓	✓	12	10 (Note 3)	✓	✓	✓	-	✓
S-DBS / DBS Telephones											
VB-3411	12 key standard	-	-	-	12	10	✓(Note 2)	✓	✓	-	✓
VB-3411DS	12 key executive	-	✓	✓	12	10	✓(Note 2)	✓	✓	✓	✓
VB-3411LDS	12 key large display	-	✓	✓	12	10	✓(Note 2)	✓	✓	✓	✓
VB-3611D	24 key executive	-	✓	✓	24	10	✓(Note 2)	✓	✓	✓	✓
VB-3611DS	24 key executive	-	✓	✓	24	10	✓(Note 2)	✓	✓	✓	✓
VB-3631	72 key console	-	-	-	72	0	-	✓	-	-	✓

Note 1
Note 2
Note 3

Legacy Terminals are not available as new from Panasonic
Message Waiting Tone available now, Message LED on Flexible Feature Key available during 2000
Programming required

S-ICX Connection Diagram



The S-ICX provides all the features you would expect from a telephone system. It is also capable of working with modern equipment, such as Unified Messaging Systems and Routers to become an integral part of your communications and networking solution.

Should your requirements exceed 132 ports, Panasonic offers a larger ICX for systems up to 576 ports. Contact Panasonic for details on 08700 100 464

Panasonic

Panasonic Business Systems UK
Willoughby Road, Bracknell, Berkshire RG12 8FP
www.panasonic.co.uk



Panasonic recommend that a site survey is considered for DECT applications. The design and specification of the products is constantly changing in the interest of improvement. Whilst every care is taken in preparing this brochure some changes may occur after publication. Please check with your Panasonic dealer for details.